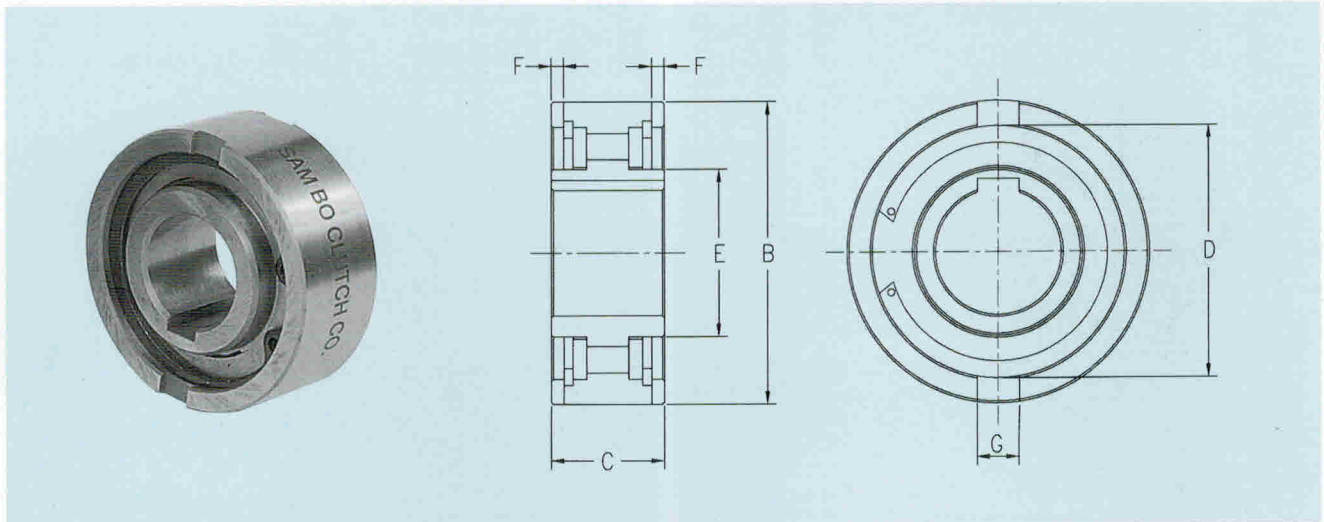


NFS-CK Series (Cam Type)

내륜 고속 다목적용 (FOR INNER RACE HIGH SPEED, GENERAL PURPOSE)



■ 사양 (Specification)

Dimensions—mm

Model	Max. Torque (kgf · m)	Maximum Overrunning (RPM)				Dimensions							Weight (g)
		Inner Race		Outer Race		A (H7)	B	C	D	E	F	G	
		Grease	Oil	Grease	Oil								
NFS-8CK	1.3	2900	5000	3450	6000	8	35	13	27	19	1	4	90
NFS-12CK	1.3	2900	5000	3450	6000	12	35	13	27	19	1	4	90
NFS-15CK	4.5	2400	4500	3100	5400	15	42	18	36	22	1	5	90
NFS-17CK	4.5	2400	4500	3100	5400	17	47	19	37	23	2	5	90
NFS-20CK	11	1900	3000	2250	3600	20	52	21	45	29	2	6	230
NFS-25CK	17.5	1400	2200	1650	2600	25	62	24	52	35	2	8	360
NFS-30CK	26.4	1250	1800	1500	2100	30	72	27	60	40	3	10	590
NFS-35CK	33.4	1100	1600	1300	1950	35	80	31	70	48	4	12	680
NFS-40CK	51.7	900	1250	1050	1500	40	90	33	78	55	4	12	910
NFS-45CK	73	840	1100	1000	1300	45	100	36	85	59	4	14	1220
NFS-50CK	103.4	660	850	800	1000	50	110	40	92	65	5	14	1720
NFS-60CK	142.9	550	700	650	840	60	130	46	110	80	6	18	2810

■ 특징

1. Cam Type 크러치임
2. 미터법에 의한 단렬 볼베어링(63계열)과 같은 직경임.
3. 내,외륜사이의 동심성을 확실하게 해주는 베어링 지주가 있어야 한다.
4. 가동전에 윤활유를 주입해야한다.

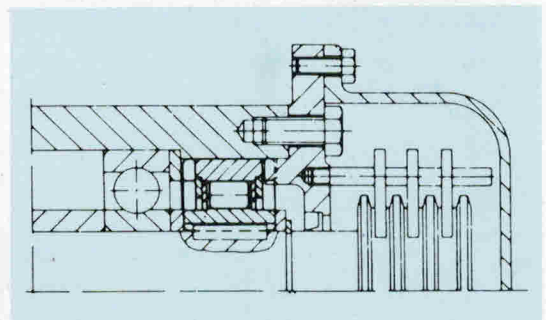
※키홀치수는 DIN규격 6885 sheet 3에 의거함(참조 : 43page).

■ Character

1. NFS-CK Series is Cam type clutch.
2. Clutches have same diameters as metric medium series ball bearing.
3. Clutches require bearing support to assure concentricity between inner and outer race.
4. Clutches must be lubricated before putting in service.

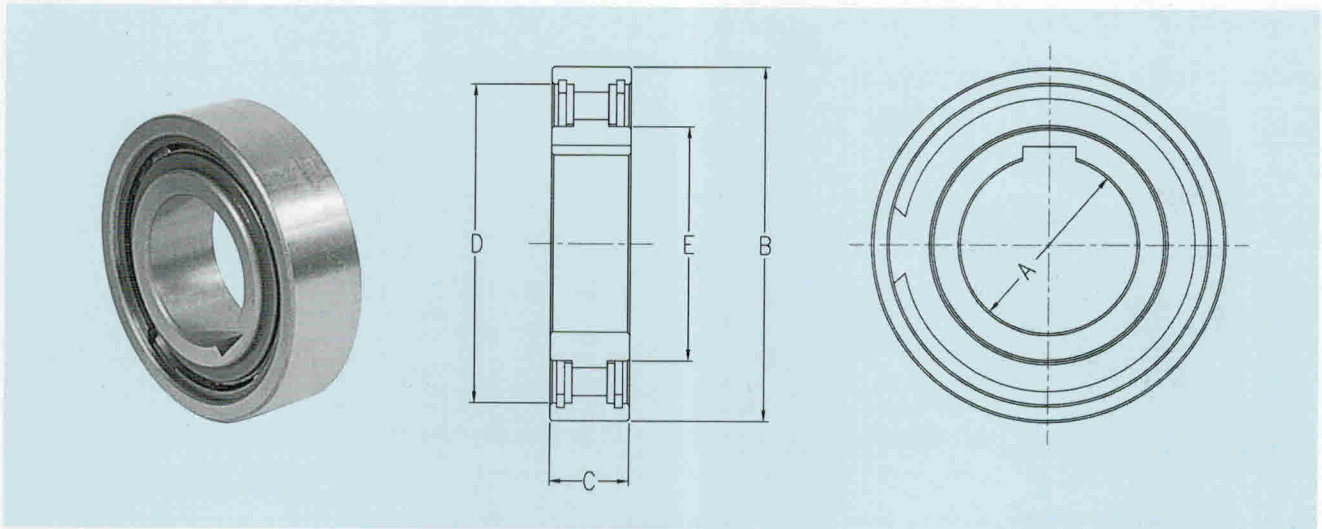
※ The key way is in accordance with DIN 6885 sheet 3. (Refer to page 43)

설치예 (application)



NSS-CK Series (Cam Type)

내륜 고속 다목적용 (FOR INNER RACE HIGH SPEED, GENERAL PURPOSE)



■ 사양 (Specification)

Dimensions—mm

Model	Max. Torque (kgf · m)	Maximum Overrunning (RPM)				Dimensions					Weight (g)
		Inner Race		Outer Race		A (H7)	B	C	D	E	
		Grease	Oil	Grease	Oil						
NSS-8CK	0.5	3500	6000	4800	7500	8	24	8	19	12	30
NSS-10CK	0.8	3100	5500	4300	7000	10	30	9	25	16	40
NSS-12CK	1.2	3000	5000	4000	6500	12	32	10	27	19	50
NSS-15CK	1.8	2800	4500	3700	5500	15	35	11	30	20	100
NSS-20CK	5	2000	3500	3300	4200	20	47	14	40	26	110
NSS-25CK	7	1500	2500	3000	3400	25	52	15	45	32	150
NSS-30CK	11.5	1300	2000	2500	2800	30	62	16	55	42	250
NSS-35CK	19	1100	1800	2000	2200	35	72	17	62	48	330
NSS-40CK	25	900	1500	1600	1800	40	80	18	72	53	410
NSS-45CK	31	800	1300	1300	1500	45	85	19	75	57	450
NSS-50CK	33.5	700	1000	1000	1200	50	90	20	80	62	500
NSS-60CK	57.8	550	8800	800	1000	60	110	22	100	78	800

■ 특징

1. Cam Type 크러치임
2. 미터법에 의한 단렬 볼베어링(62계열)과 같은 직경임.
3. 내,외륜사이의 동심성을 확실하게 해주는 베어링 지주가 있어야 한다.
4. 가동전에 윤활유를 주입해야한다.
5. 공간이 제한된 곳에서 사용이 아주 적당하다.

※키홈치수는 DIN규격 6885 sheet 3에 의거함(참조 : 43page).

■ Character

1. NSS-CK Series is Cam type clutch.
2. Clutches have same diameters as metric medium series ball bearing.
3. Clutches require bearing support to assure concentricity between inner and outer race.
4. Clutches must be lubricated before putting in service.
5. Excellent for applications where space is restricted.

※ The key way is in accordance with DIN 6885 sheet 3. (Refer to page 43)

설치에 (application)

