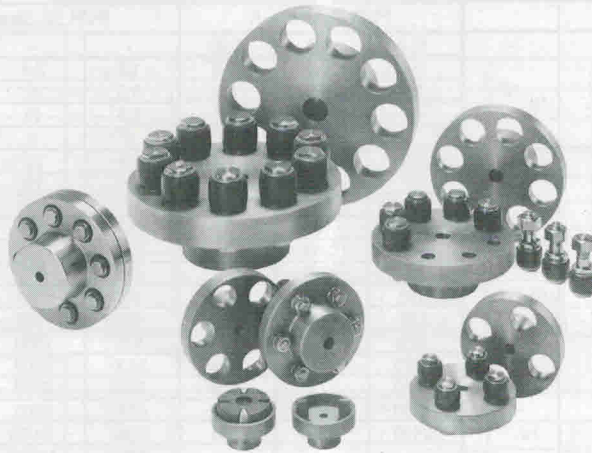


CROWN PIN COUPLING

CROWN PIN COUPLINGS

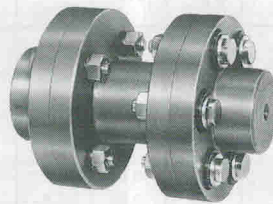
CL type



“ECC” FLEXIBLE SPACER COUPLINGS

– To add spacing member between flanges –

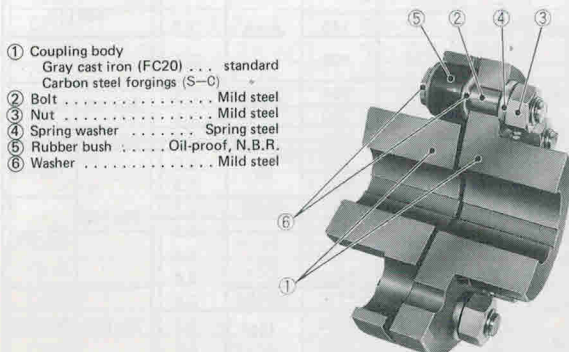
SPCL type



“ECC” FLEXIBLE SPACER COUPLINGS

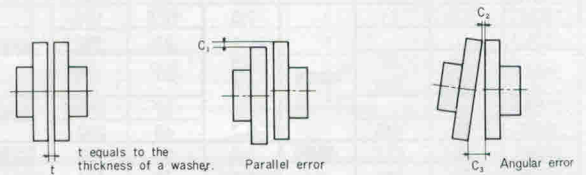
Among various types of shaft couplings, flanged type flexible shaft couplings have been widely used in the world as one of the best economical types with simple construction, easy installation and no maintenance

Structure and materials



- ① Coupling body
Gray cast iron (FC20) . . . standard
Carbon steel forgings (S-C)
- ② Bolt Mild steel
- ③ Nut Mild steel
- ④ Spring washer Spring steel
- ⑤ Rubber bush Oil-proof, N.B.R.
- ⑥ Washer Mild steel

Allowance for installation errors.



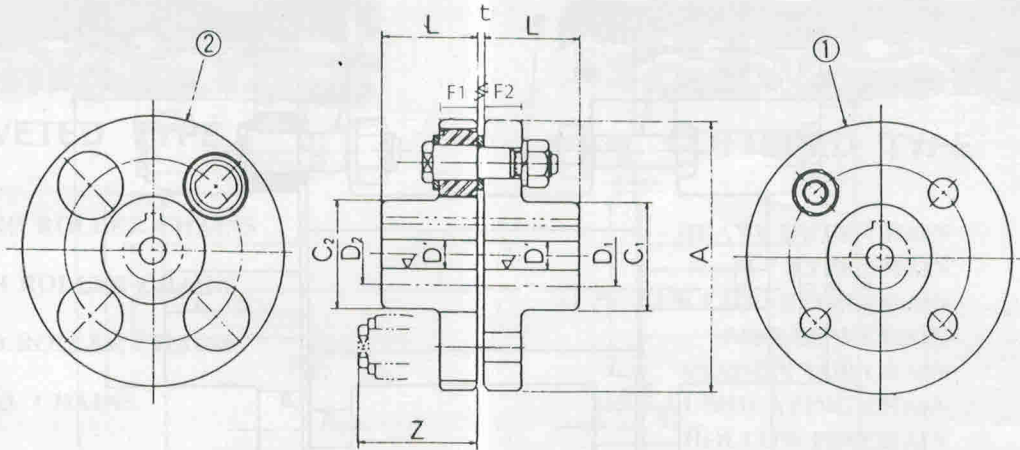
Revolution Rpm	2000 over		2000~500		500~50		50 under	
	C_1	$C_3 - C_2$	C_1	$C_3 - C_2$	C_1	$C_3 - C_2$	C_1	$C_3 - C_2$
Permissible amount	0.05	0.05	0.1	0.1	0.15	0.15	0.2	0.2

(Note) * Values are common to all types

* Obtain higher accuracy if works causes vibrations oftenly.

CROWN PIN COUPLING "CL" TYPE

DIMENSIONS and SPECIFICATIONS

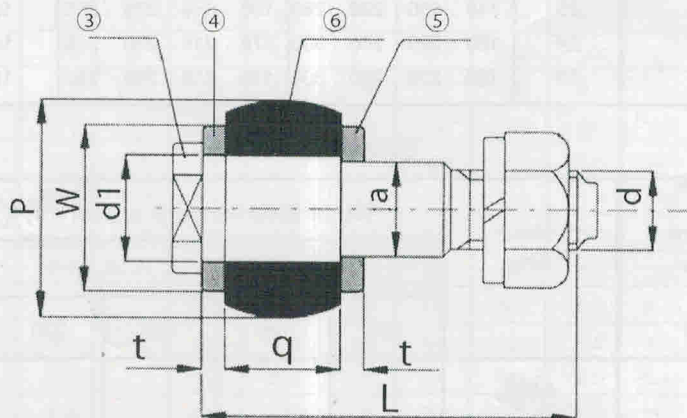


(mm.)

Type Number A	Max. Shaft Dia		Pilot Bore D	L	C		F ₁ F ₂	F ₂ F ₁	t	Bolt Remove Clearance (Z)	Weight (kg)	Transmit Torque T (n.m.)	Max.rpm	Bolt No.	n
	D1	D2			d ₁	d ₂									
CL 90	20		11	28	35.5		14	14	3	50	1.5	4	4,000	#1	4 - M8 X 50
CL 100	25		11	35.5	42.5		16	16	3	56	2.2	10	4,000	#2	4 - M10 X 56
CL 112	28		13	40	50		16	16	3	56	2.9	16	4,000	#2	4 - M10 X 56
CL 125	32	30	13	45	56	50	18	18	3	64	3.9	25	4,000	#3	4 - M12 X 64
CL 140	42	38	13	50	71	63	18	18	3	64	5.4	50	4,000	#3	6 - M12 X 64
CL 160	45		15	56	80		18	18	3	64	7.6	110	4,000	#3	8 - M12 X 64
CL 180	50		15	63	90		18	18	3	64	10.3	157	3,500	#3	8 - M12 X 64
CL 200	56		21	71	100		22.4	22.4	4	85	15.7	245	3,200	#4	8 - M20 X 85
CL 224	65		21	80	112		22.4	22.4	4	85	20.7	392	2,850	#4	8 - M20 X 85
CL 250	75		25	90	125		28	28	4	100	30	618	2,550	#5	8 - M24 X 100
CL 280	80		34	100	140		28	40	4	116	42	980	2,300	#6	8 - M24 X 116
CL 315	90		41	112	160		28	40	4	116	56	1,568	2,050	#6	10 - M24 X 116
CL 355	105		60	125	180		35.5	56	5	150	86	2,450	1,800	#8	8 - M30 X 150
CL 400	110		60	125	200		35.5	56	5	150	109	3,920	1,600	#8	10 - M30 X 150
CL 450	125		65	140	224		35.5	56	5	150	144	6,174	1,400	#8	12 - M30 X 150
CL 560	140		85	160	250		35.5	56	5	150	225	9,800	1,150	#8	14 - M30 X 150
CL 630	160		95	180	280		35.5	56	5	150	298	15,680	1,000	#8	18 - M30 X 150

- Note:
1. D1 for driving side, D2 for driven side
 2. Rubber bush is oil proof, N,B,R

Dimensions of connecting bolt / nut.

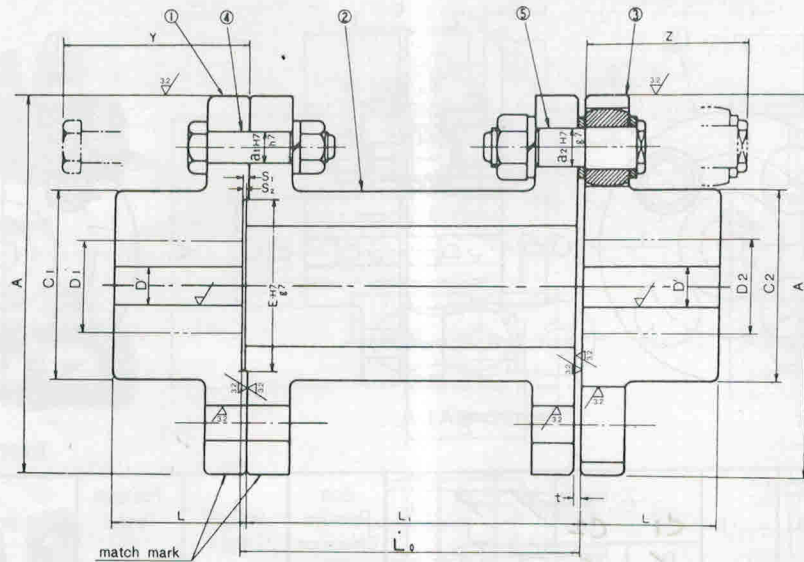


(mm.)

Bolt	③ bolt												④ washer			⑥ rubber bush			⑤ washer			
	NO.	a x l	d	d ₁	a	c	e	f	g	h	s	k	m	l	d ₁	t	w	d ₁	p	q	a	t
#1	8 x 50	M8	9	8	5.5	12	10	4	15	12	2	17	50	9	3	14	9	18	14	8	3	14
#2	10 x 56	M10	12	10	7	16	13	4	17	14	2	19	56	12	3	18	12	22	16	10	3	18
#3	14 x 64	M12	16	14	9	19	17	5	19	16	3	21	64	16	3	25	16	31	18	14	3	25
#4	20 x 85	M20	22.4	20	15	28	24	5	24.6	25	4	26.4	85	22.4	4	32	22.4	40	22.4	20	4	32
#5	25 x 100	M24	28	25	18	34	30	6	30	27	5	32	100	28	4	40	28	50	28	25	4	40
#6	28 x 116	M24	31.5	28	18	38	32	6	30	31	5	44	116	31.5	4	45	31.5	56	40	28	4	45
#8	35.5 x 150	M30	40	35.5	23	48	41	8	38.5	36.5	6	61	150	40	5	56	40	71	56	35.5	5	56

CROWN PIN COUPLING "SPCL" TYPE

DIMENSIONS and SPECIFICATIONS



Dimensions

(mm.)

TYPE SPCL AXL ₀	Shaft dia. D			L ₀	L ₁	C		L	t	Bolt remove clearance	
	Max.		pilot bore (rough) D			C1	C2			Y	Z
	D1	D2									
*SPCL 112XL ₀	28		13	100	97	50		40	3	69	56
SPCL 125XL ₀	32	28	13	100	97	56	50	45	3	81	64
SPCL 140XL ₀	38	35	13	100 . 140	97 . 137	71	63	50	3		
SPCL 160XL ₀	45		15	100 . 140	97 . 137	80		56	3		
SPCL 180XL ₀	50		15	100 . 140 . 180	97 . 137 . 177	90		63	3		
SPCL 200XL ₀	56		21	140 . 180 . 220	136 . 176 . 216	100		71	4	103	85
SPCL 224XL ₀	63		21	140 . 180 . 220	136 . 176 . 216	112		80	4		
SPCL 250XL ₀	71		25	140 . 180 . 220 . 260	136 . 176 . 216 . 256	125		90	4	126	100
SPCL 280XL ₀	80		34	180 . 220 . 260 . 300	176 . 216 . 256 . 296	140		100	4		116
SPCL 315XL ₀	90		40	180 . 220 . 260 . 300	176 . 216 . 256 . 296	160		112	4		

Specifications

TYPE SPCL AXL ₀	Transmit torque T (kgm)	Max. RPM	Wt. of fixed flange & spacer ((1)+(2)+(4)+(5)) (kg)						Wt. of flexible side flange (3) (kg)
			L ₀						
			100	140	180	220	260	300	
SPCL 112XL ₀	1.6	4,000	4.5	1.2
SPCL 125XL ₀	2.5	4,000	6.2	1.6
SPCL 140XL ₀	5	4,000	8.2	8.7	2.2
SPCL 160XL ₀	11.2	4,000	11	11.7	3.2
SPCL 180XL ₀	16	3,500	13.8	14.7	15.7	.	.	.	4.6
SPCL 200XL ₀	25	3,200	.	22.9	24	25.2	.	.	6.3
SPCL 224XL ₀	40	2,850	.	28.2	29.6	31	.	.	8.9
SPCL 250XL ₀	63	2,550	.	13.1	45	46.9	48.8	.	12.4
SPCL 280XL ₀	100	2,300	.	.	56.9	59.3	61.8	64.2	17.8
SPCL 315XL ₀	160	2,050	.	.	72.8	75.9	79	82	23.8