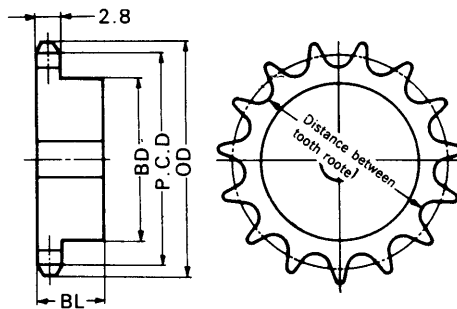


# ANSI 25 SPROCKETS



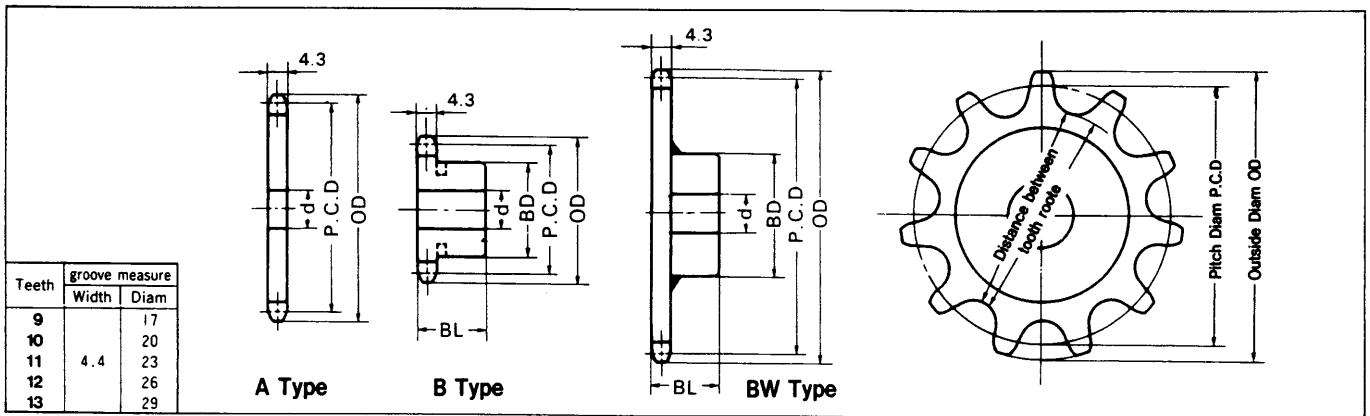
**Single Strand B Type**

Dimensions (millimeters)

No. of Teeth	Outside Diam. OD	Pitch Diam. P.C.D	Bottom or Caliper Diam.	Stock Bore	Type "B" SINGLE STRAND				Wt. kg	Material
					HUB		BORE			
					Diam. BD	Length Thru Bore BL	Min.	Max.		
10	23	20.55	17.25	6.5	14	15	8	8.5	0.03	S45C
11	25	22.54	19.01	6.5	15	15	8	8.5	0.03	
12	28	24.53	21.23	7.5	15	15	8	9.5	0.03	
13	30	26.53	23.04	7.5	18	15	9.5	10	0.05	
14	32	28.54	25.24	7.5	20	15	9.5	10	0.05	
15	34	30.54	27.07	7.5	20	15	9.5	10	0.05	
16	36	32.55	29.25	9.5	25	15	11.5	12	0.06	
17	38	34.56	31.11	9.5	25	15	11.5	12	0.07	
18	40	36.57	33.27	9.5	25	15	11.5	12	0.07	
19	42	38.58	35.15	9.5	28	15	11.5	16	0.08	
20	44	40.59	37.29	9.5	28	15	11.5	16	0.08	
21	46	42.61	39.19	9.5	28	15	11.5	16	0.09	
22	48	44.62	41.32	9.5	30	15	11.5	16	0.10	
23	50	46.63	43.23	9.5	30	15	11.5	16	0.11	
24	52	48.65	45.35	9.5	30	15	11.5	16	0.12	
25	54	50.66	47.27	9.5	35	15	11.5	20	0.14	
26	56	52.68	49.38	9.5	35	15	11.5	20	0.14	
27	58	54.70	51.30	9.5	35	15	11.5	20	0.15	
28	60	56.71	53.41	9.5	35	15	11.5	20	0.15	
29	62	58.73	55.35	9.5	35	15	11.5	20	0.16	
30	64	60.75	57.45	9.5	35	15	11.5	20	0.16	
31	66	62.77	59.39	10.5	40	20	12.5	22	0.20	
32	68	64.78	61.48	10.5	40	20	12.5	22	0.20	
33	70	66.80	63.43	10.5	40	20	12.5	22	0.20	
34	72	68.82	65.52	10.5	40	20	12.5	22	0.21	
35	74	70.84	67.47	10.5	40	20	12.5	22	0.21	
36	76	72.86	69.56	10.5	40	20	12.5	22	0.22	
37	78	74.88	71.51	10.5	40	20	12.5	22	0.26	
38	80	76.90	73.60	10.5	40	20	12.5	22	0.26	
39	82	78.91	75.55	10.5	40	20	12.5	22	0.27	
40	84	80.93	77.63	10.5	40	20	12.5	22	0.27	
41	87	82.95	79.59	10.5	50	20	12.5	30	0.32	
42	89	84.97	81.67	10.5	50	20	12.5	30	0.32	
43	91	86.99	83.63	10.5	50	20	12.5	30	0.40	
44	93	89.01	85.71	10.5	50	20	12.5	30	0.41	
45	95	91.03	87.68	10.5	50	20	12.5	30	0.41	
48	101	97.09	93.79	10.5	50	20	12.5	30	0.43	
50	105	101.13	97.83	10.5	50	20	12.5	30	0.46	
54	113	109.21	105.91	10.5	50	20	12.5	30	0.47	
60	125	121.33	118.03	10.5	50	20	12.5	30	0.52	
65	135	131.43	128.09	11.5	50	30	13.5	30	0.72	
70	145	141.54	138.24	11.5	50	30	13.5	30	0.77	
75	155	151.64	148.31	11.5	50	30	13.5	30	0.82	
80	165	161.74	158.44	11.5	50	30	13.5	30	0.88	

NOTES: - Data in colored box imply S45C machined without teeth hardening.    
 - Other sprockets than listed may be manufactured. For details, contact us.  
 - Shaft hole, key groove and tap hole may be machined upon request.

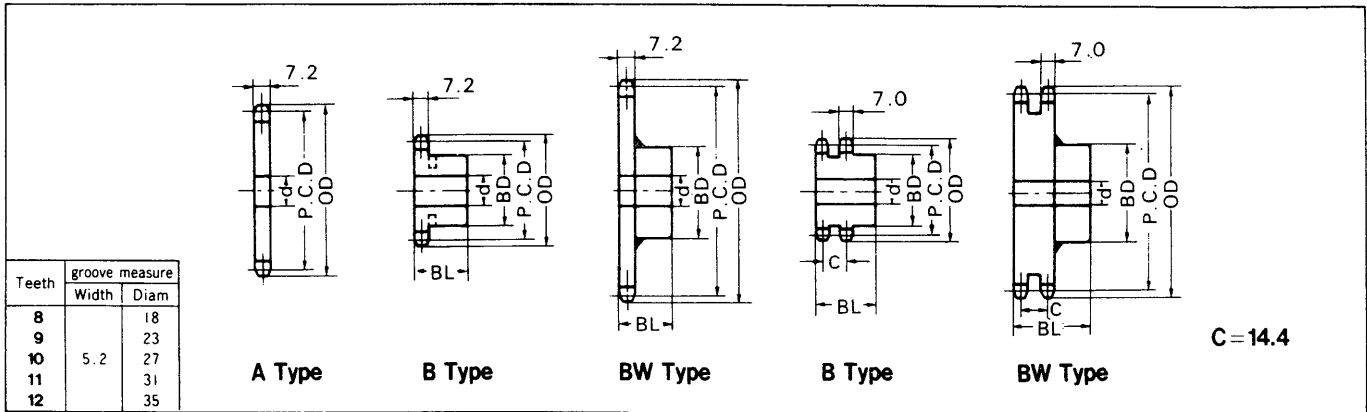
# ANSI 35 SPROCKETS



No. of Teeth	Outside Diam. OD	Pitch Diam. P.C.D	Bottom or Caliper Diam.	Stock Bore	Type "B" SINGLE STRAND				Wt. kg	Material	Type "A"		
					HUB		BORE				Stock d	Wt. kg	Material
					Diam. BD	Length Thru Bore BL	Min.	Max.					
9	32	27.85	22.35	8.5	★21.5	20	10.5	11	0.06				
10	34	30.82	25.74	8.5	★24.5	20	10.5	12	0.08	10.5	0.02		
11	38	33.81	28.38	8.5	★27	20	10.5	14	0.09	10.5	0.03		
12	41	36.80	31.72	9.5	★30.5	20	11.5	16	0.12	11.5	0.02		
13	44	39.80	34.43	9.5	★32	20	11.5	18	0.12	11.5	0.04		
14	47	42.81	37.73	9.5	32	20	11.5	18	0.12	11.5	0.04		
15	51	45.81	40.48	9.5	35	20	11.5	20	0.16	11.5	0.05		
16	54	48.82	43.74	9.5	37	20	11.5	20	0.19	11.5	0.05		
17	57	51.84	46.54	11.5	41	20	13.5	25	0.22	13.5	0.07		
18	60	54.85	49.77	11.5	44	20	13.5	25	0.25	13.5	0.07		
19	63	57.87	52.59	11.5	47	20	13.5	28	0.28	13.5	0.09		
20	66	60.89	55.81	11.5	50	20	13.5	30	0.32	13.5	0.09		
21	69	63.91	58.65	11.5	53	20	13.5	32	0.36	13.5	0.11		
22	72	66.93	61.85	11.5	56	20	13.5	35	0.37	13.5	0.11		
23	75	69.95	64.71	11.5	60	20	13.5	38	0.38	13.5	0.11		
24	78	72.97	67.89	11.5	53	22	13.5	32	0.43	13.5	0.14		
25	81	76.00	70.77	11.5	53	22	13.5	32	0.44	13.5	0.16		
26	84	79.02	73.94	11.5	53	22	13.5	32	0.45	13.5	0.16		
27	87	82.05	76.83	11.5	53	22	13.5	32	0.46	13.5	0.17		
28	90	85.07	79.99	11.5	53	22	13.5	32	0.48	13.5	0.18		
29	93	88.10	82.89	11.5	53	22	13.5	32	0.49	13.5	0.18		
30	96	91.12	86.04	11.5	53	22	13.5	32	0.51	13.5	0.23		
31	99	94.15	88.95	11.5	53	22	13.5	32	0.53				
32	102	97.18	92.10	11.5	53	22	13.5	32	0.54	13.5	0.27		
33	105	100.20	95.01	11.5	53	22	13.5	32	0.56	13.5	0.28		
34	109	103.23	98.15	11.5	53	22	13.5	32	0.57	13.5	0.29		
35	112	106.26	101.07	11.5	53	22	13.5	32	0.59	13.5	0.30		
36	115	109.29	104.21	12.5	53	22	14.5	32	0.61	14.5	0.32		
37	118	112.31	107.13	12.5	63	25	14.5	42	0.80				
38	121	115.34	110.26	12.5	63	25	14.5	42	0.82	14.5	0.41		
39	124	118.37	113.23	12.5	63	25	14.5	42	0.84				
40	127	121.40	116.32	12.5	63	25	14.5	42	0.85	14.5	0.43		
41	130	124.43	119.26	16	63	25	18	42	0.91				
42	133	127.46	122.38	16	63	25	18	42	0.93	18	0.43		
43	136	130.49	125.32	16	63	25	18	42	0.95				
44	139	133.52	128.44	16	63	25	18	42	0.97				
45	142	136.55	131.38	16	63	25	18	42	1.00	18	0.49		
46	145	139.58	134.50	16	63	25	18	42	1.01	18	0.51		
47	148	142.61	137.45	16	63	25	18	42	1.03				
48	151	145.64	140.56	16	63	25	18	42	1.05	18	0.55		
50	157	151.70	146.62	16	63	25	18	42	1.07	18	0.60		
53	166	160.78	155.63	16	63	25	18	42	1.09				
54	169	163.80	158.73	16	63	25	18	42	1.10	18	0.70		
55	172	166.85	161.70	16	63	25	18	42	1.25	18	0.71		
60	187	182.00	176.92	16	63	25	18	42	1.30	18	0.80		
64	200	194.12	189.04	16	63	25	18	42	1.46				
65	203	197.15	192.07	16	68	25	18	45	1.67				
70	218	212.30	207.22	16	68	25	18	45	1.80				
75	233	227.46	222.33	16	68	25	18	45	1.90				
80	248	242.61	237.53	16	68	25	18	45	2.40	18	1.50		

NOTES:  
 - Data in colored box imply teeth hardening.  
 - Shaft hole, key groove and tap hole can be machined upon request.  
 - Other sprockets than listed may be manufactured. For details, contact us.  
 - Sprocket marked with ★ has a groove all the external circumference of boss. See Groove Dimensions table above.

# ANSI 40 SPROCKETS

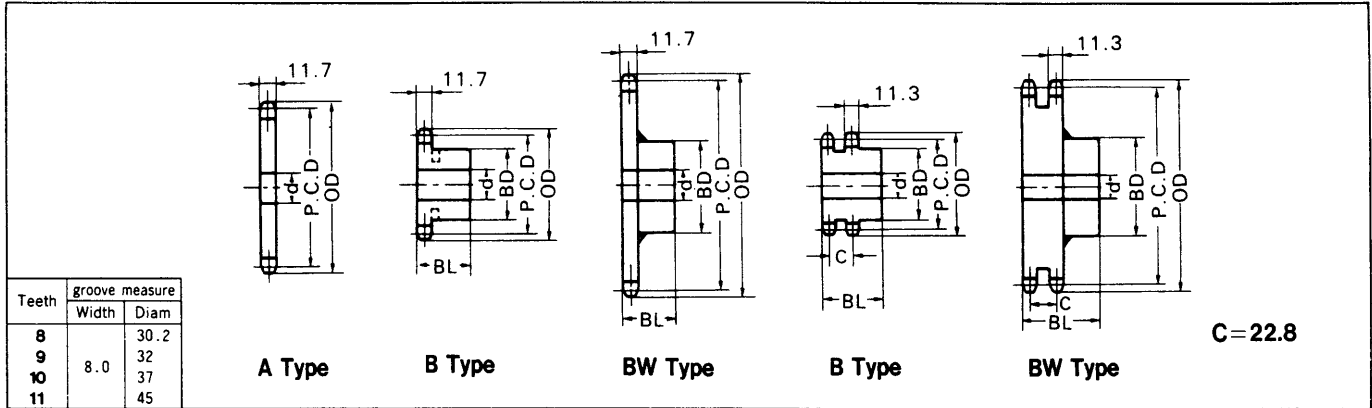


No. of Teeth	Outside Dia. OD	Pitch Dia. P.C.D	Bottom or Caliper Diam.	Stock Bore	Type "B" SINGLE STRAND						Type "A"			Type "B" DOUBLE STRAND							
					HUB		BORE		Wt. kg	Material	Stock d	Wt. kg	Material	HUB		BORE		Wt. kg	Material		
					Diam. BD	Length Thru Bore BL	Min.	Max.						Diam. BD	Length Thru Bore BL	Min.	Max.				
8	38	33.19	25.25	8.5	★24	22	10.5	10.5	0.06												
9	42	37.13	28.62	8.5	★28	22	10.5	16	0.11												
10	46	41.10	33.15	9.5	★32	22	11.5	18	0.14												
11	51	45.08	36.67	10.5	★36	22	12.5	20	0.19			11.5	0.09		28	35	15	16	0.28		
12	55	49.07	41.12	10.5	★40	22	12.5	22	0.22			12.5	0.10		35	35	16	20	0.34		
13	59	53.07	44.73	13.5	37	22	15.5	20	0.23			15.5	0.12		39	35	16	22	0.40		
14	63	57.07	49.12	13.5	42	22	15.5	25	0.28			15.5	0.14		43	35	16	25	0.47		
15	67	61.08	52.80	13.5	46	22	15.5	28	0.34			15.5	0.16		47	35	16	28	0.55		
16	71	65.10	57.15	13.5	50	22	15.5	30	0.40			15.5	0.18		50	35	16	30	0.65		
17	76	69.12	60.87	13.5	54	22	15.5	32	0.46			15.5	0.20		54	35	16	32	0.75		
18	80	73.14	65.19	13.5	57	22	15.5	35	0.51			15.5	0.23		59	35	16	38	0.85		
19	84	77.16	68.95	13.5	62	22	15.5	40	0.59			15.5	0.24		63	35	16	42	0.98		
20	88	81.18	73.02	14.5	67	25	16.5	45	0.76			16.5	0.29		67	40	16	45	1.30		
21	92	85.21	77.02	14.5	71	25	16.5	48	0.85			16.5	0.30		68	40	16	45	1.30		
22	96	89.24	81.29	14.5	75	25	16.5	51	0.95	S35C		16.5	0.35		72	40	16	48	1.50		
23	100	93.27	85.10	14.5	77	25	16.5	51	1.00			16.5	0.38		76	40	16	51	1.60		
24	104	97.30	89.35	14.5	63	25	16.5	42	0.84			16.5	0.40		80	40	16	55	1.80		
25	108	101.33	93.18	14.5	63	25	16.5	42	0.88			16.5	0.45		84	40	20	57	2.00		
26	112	105.36	97.41	14.5	63	25	16.5	42	0.92			16.5	0.49		88	40	20	60	2.20		
27	116	109.40	101.26	14.5	63	25	16.5	42	0.96			16.5	0.50		92	40	20	60	2.30		
28	120	113.43	105.48	14.5	63	25	16.5	42	1.00			16.5	0.56		96	40	20	66	2.50		
29	124	117.46	109.34	14.5	63	25	16.5	42	1.00			16.5	0.60		96	40	20	66	2.65		
30	128	121.50	113.55	14.5	63	25	16.5	42	1.10			16.5	0.63		100	40	20	66	2.80		
31	133	125.53	117.42	14.5	68	28	16.5	45	1.20			16.5	0.65		100	50	25	66	2.95		
32	137	129.57	121.62	14.5	68	28	16.5	45	1.30			16.5	0.70	SS41	100	50	25	66	3.05		
33	141	133.61	125.50	14.5	68	28	16.5	45	1.30			16.5	0.75		100	50	25	66	3.06		
34	145	137.64	129.69	14.5	68	28	16.5	45	1.30			16.5	0.80		100	50	25	66	3.08		
35	149	141.68	133.59	14.5	68	28	16.5	45	1.40			16.5	0.85		100	50	25	66	3.10		
36	153	145.72	137.77	16	68	28	18	45	1.50			18	0.90		100	50	25	66	3.30		
38	161	153.79	145.84	16	68	28	18	45	1.60			18	1.00		100	50	25	66	3.50		
39	165	157.83	149.75	16	68	28	18	45	1.65			18	1.15		100	50	25	66	3.50		
40	169	161.87	153.92	16	68	28	18	45	1.70			18	1.20		100	50	25	66	3.60		
41	173	165.91	157.97	16	73	32	18	48	2.00			18	1.20								
42	177	169.95	162.01	16	73	32	18	48	2.05			18	1.25								
43	181	173.98	166.04	16	73	32	18	48	2.10			18	1.30		93	50	25	63	4.00		
44	185	178.02	170.08	16	73	32	18	48	2.17			18	1.35								
45	189	182.06	174.12	16	73	32	18	48	2.25			18	1.40		93	50	25	63	4.60		
48	201	194.18	186.24	16	73	32	18	48	2.45			18	1.63		93	50	25	63	5.00		
49	205	198.22	190.28	16	73	32	18	48	2.51			18	1.73								
50	209	202.26	194.32	16	73	32	18	48	2.60			18	1.80		93	50	25	63	5.50		
51	214	206.30	198.36	16	73	32	18	48	2.65			18	1.88								
52	218	210.34	202.40	16	73	32	18	48	2.72			18	1.93								
53	222	214.38	206.44	16	73	32	18	48	2.80			18	1.98								
54	226	218.42	210.48	16	73	32	18	48	2.90			18	2.00		93	50	25	63	5.80		
60	250	242.66	234.72	16	73	32	18	48	3.40			18	2.60		93	50	25	63	6.70		
65	270	262.87	254.93	16	83	32	18	55	4.10			18	3.00		93	50	25	63	10.20		
70	290	283.07	275.13	16	83	32	18	55	4.57			18	3.50		93	50	25	63	11.50		
72	299	291.16	283.22	20	83	32	22	55	4.80			22	3.70								
75	311	303.28	295.34	20	83	32	22	55	5.10			22	4.00								
80	331	323.49	315.55	20	88	35	22	60	5.90			22	4.60								
85	351	343.69	335.75	20	88	35	22	60	6.50			22	5.20								
90	371	363.90	355.96	20	88	35	22	60	7.15			22	5.80								

- NOTES:
- Data in colored box imply teeth hardening.
  - Shaft hole, key groove and tap hole can be machined upon request.
  - Other sprockets than listed may be manufactured. For details, contact us.
  - Sprocket marked with ★ has a groove at the external circumference of boss. See Groove Dimensions table above.
  - Finished diameter of Drill hole of B-type (double-strand) sprocket is minimum shaft hole diameter minus 2 mm.



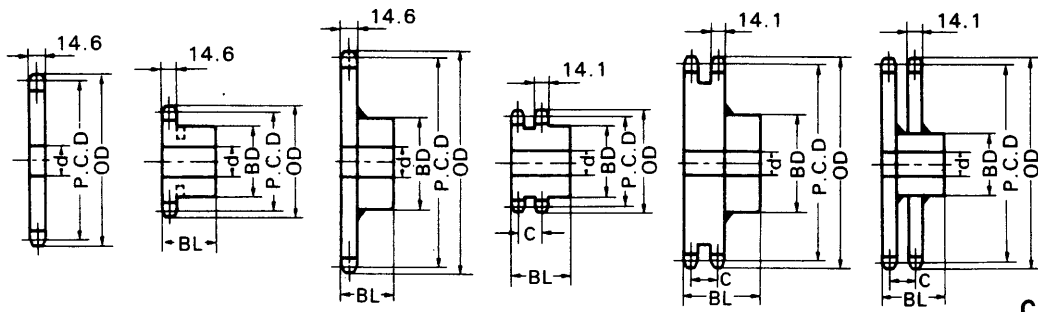
# ANSI 60 SPROCKETS



No. of Teeth	Outside Dia. OD	Pitch Dia. P.C.D	Bottom or Caliper Diam.	Stock Bore	Type "B" SINGLE STRAND				Type "A"			Type "B" DOUBLE STRAND							
					HUB		BORE		Wt. kg	Material	Stock d	Wt. kg	Material	HUB		BORE		Wt. kg	Material
					Diam. BD	Length Thru Bore BL	Min.	Max.						Diam. BD	Length Thru Bore BL	Min.	Max.		
8	57	49.78	37.87	11.5	★26	32	13.5	14	0.23										
9	63	55.70	42.94	11.5	★43	32	13.5	25	0.40										
10	70	61.65	49.74	14.5	★49	32	16.5	30	0.49										
11	76	67.62	55.02	14.5	★51	32	16.5	32	0.60										
12	83	73.60	61.69	14.5	51	32	16.5	32	0.69										
13	89	79.60	67.11	14.5	57	32	16.5	35	0.81										
14	95	85.61	73.70	16	62	32	18	40	0.96										
15	101	91.62	79.21	16	68	32	18	45	1.10										
16	107	97.65	85.74	16	73	32	18	48	1.30										
17	113	103.67	91.32	16	73	32	18	48	1.40										
18	119	109.71	97.80	16	83	40	18	55	2.00										
19	126	115.74	103.43	16	83	40	18	55	2.10										
20	132	121.78	109.87	16	83	40	18	55	2.20										
21	138	127.82	115.55	16	83	40	18	55	2.30										
22	144	133.86	121.95	16	83	40	18	55	2.50										
23	150	139.90	127.67	16	83	40	18	55	2.50										
24	156	145.95	134.04	16	83	40	18	55	2.60										
25	162	151.99	139.79	16	83	40	18	55	2.70										
26	168	158.04	146.13	16	83	40	18	55	2.90										
27	174	164.09	151.90	20	83	40	22	55	3.00										
28	180	170.14	158.23	20	83	40	22	55	3.10										
29	187	176.20	164.03	20	83	40	22	55	3.30										
30	193	182.25	170.34	20	83	40	22	55	3.40										
31	199	188.30	176.15	20	83	40	22	55	3.60										
32	205	194.35	182.44	20	83	40	22	55	3.84										
33	211	200.41	188.27	20	83	40	22	55	4.00										
34	217	206.46	194.55	20	83	40	22	55	4.15										
35	223	212.52	200.39	20	83	40	22	55	4.33										
36	229	218.57	206.66	20	83	40	22	55	4.52										
37	235	224.63	212.52	20	83	40	22	55	4.70										
38	241	230.69	218.78	20	83	40	22	55	4.90										
39	247	236.74	224.64	20	83	40	22	55	5.10										
40	253	242.80	230.89	20	83	40	22	55	5.30										
42	266	254.92	243.01	20	93	45	22	63	6.40										
43	272	260.98	248.89	20	93	45	22	63	6.60										
44	278	267.03	255.12	20	93	45	22	63	6.88										
45	284	273.09	261.02	20	93	45	22	63	7.10										
48	302	291.27	279.36	20	93	45	22	63	7.85										
60	375	363.99	352.08	20	93	45	22	63	11.30										
64	399	388.24	376.33	20	93	45	22	63	12.50										
65	405	394.30	382.28	26	107	45	28	75	13.50										
70	436	424.61	412.70	26	107	45	28	75	15.30										
72	448	436.73	424.82	26															
75	466	454.92	442.91	26	107	45	28	75	17.20										
80	496	485.23	473.32	26	117	50	28	75	20.00										
85	527	515.54	503.54	26	117	50	28	75	22.30										
90	557	545.85	533.94	26	117	50	28	75	24.60										

NOTES:  
 • Data in colored box imply teeth hardening  
 • Shaft hole, key groove and tap hole can be machined upon request.  
 • Other sprockets than listed may be manufactured. For details, contact us.  
 • Sprocket marked with ★ has a groove at the external circumference of boss. See Groove Dimensions table above  
 • Finished diameter of Drill hole of B-type (double-strand) sprocket is minimum shaft hole diameter minus 2 mm.

# ANSI 80 SPROCKETS



C=29.3

Teeth	groove measure	
	Width	Diam
9	10.4	44

A Type

B Type

BW Type

B Type

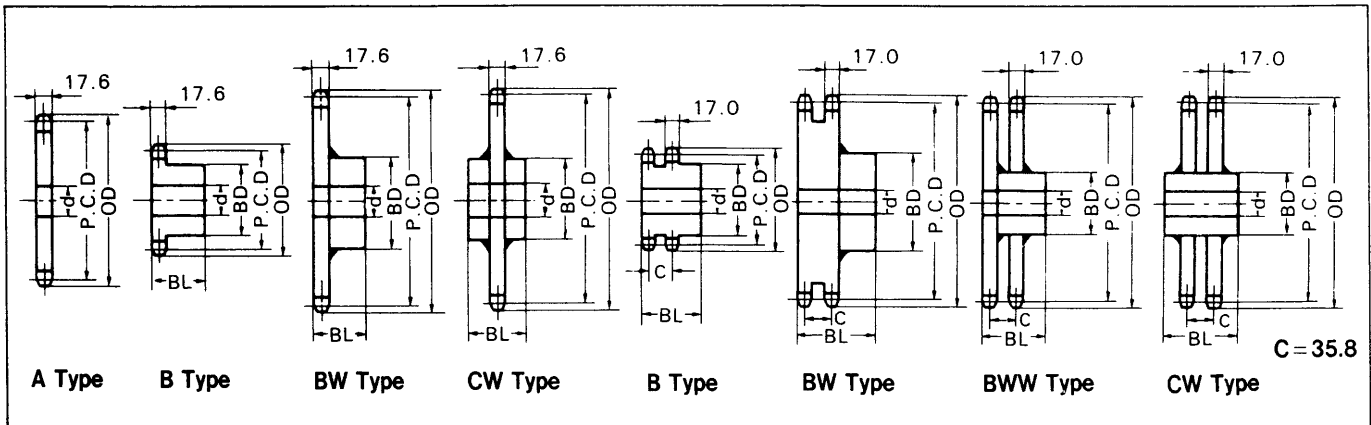
BW Type

BWW Type

No. of Teeth	Outside Dia. OD	Pitch Dia. P.C.D	Bottom of Caliper Diam.	Stock Bore	Type "B" SINGLE STRAND				Type "A"			Type "B" DOUBLE STRAND							
					HUB		BORE		Wt. kg	Material	Stock d	Wt. kg	Material	HUB		BORE		Wt. kg	Material
					Diam. BD	Length Thru Bore BL	Min.	Max.						Diam. BD	Length Thru Bore BL	Min.	Max.		
9	85	74.27	57.27	16.5	★58	40	18.5	35	0.87										
10	93	82.19	66.31	16.5	52	40	18.5	32	1.02										
11	102	90.15	73.36	16.5	60	40	18.5	38	1.25	18.5	0.73	60	63	23	35	2.00			
12	110	98.14	82.26	16	67	40	18	45	1.60	18	0.85	69	63	25	46	2.70			
13	118	106.14	89.48	16	77	40	18	51	1.90	18	1.00	80	63	25	55	3.40			
14	127	114.15	98.27	16	77	40	18	51	2.15	18	1.16	88	63	25	60	3.90			
15	135	122.17	105.62	20	93	40	22	63	2.30	22	1.30	95	63	25	63	4.40			
16	143	130.20	114.32	20	93	40	22	63	2.50	22	1.50	100	71	25	66	5.40			
17	151	138.23	121.76	20	93	40	22	63	2.95	22	1.70	100	71	25	66	6.00			
18	159	146.27	130.39	20	93	40	22	63	3.15	22	1.90	120	71	25	80	7.50			
19	167	154.32	137.91	20	93	40	22	63	3.40	22	2.10	120	71	25	80	8.00			
20	176	162.37	146.49	20	93	40	22	63	3.60	22	2.35	130	71	25	89	9.00			
21	184	170.42	154.06	20	93	40	22	63	3.85	22	2.57	130	71	25	89	9.50			
22	192	178.48	162.60	26	107	45	28	75	5.00	28	2.82	117	71	35	80	8.80			
23	200	186.54	170.22	26	107	45	28	75	5.23	28	3.10	117	71	35	80	9.30			
24	208	194.60	178.72	26	107	45	28	75	5.50	28	3.35	117	80	35	80	10.50			
25	216	202.66	186.38	26	107	45	28	75	5.80	28	3.65	117	80	35	80	11.10			
26	224	210.72	194.84	26	107	45	28	75	6.10	28	3.95	117	80	35	80	11.70			
27	233	218.79	202.54	26	107	45	28	75	6.40	28	4.25								
28	241	226.86	210.98	26	107	45	28	75	6.75	28	4.60	117	80	35	80	13.50			
29	249	234.93	218.70	26	107	45	28	75	7.10	28	4.93								
30	257	243.00	227.12	26	107	45	28	75	7.40	28	5.30	117	80	35	80	14.20			
31	265	251.07	234.86	26	107	45	28	75	7.80	28	5.63								
32	273	259.14	243.26	26	107	45	28	75	8.15	28	6.00	117	80	35	80	16.50			
33	281	267.21	251.03	26	107	45	28	75	8.50	28	6.40								
34	289	275.29	259.41	26	107	45	28	75	8.90	28	6.80								
35	297	283.36	267.19	26	107	45	28	75	9.30	28	7.20	117	80	35	80	17.90			
36	306	291.43	275.55	26	117	50	28	80	10.60	28	7.60	117	80	35	80	19.00			
37	314	299.51	283.36	26	117	50	28	80	11.00	28	8.00								
38	322	307.58	291.70	26	117	50	28	80	11.40	28	8.50	127	80	40	89	21.00			
39	330	315.66	299.52	26	117	50	28	80	11.90	28	8.90								
40	338	323.74	307.86	26	117	50	28	80	12.40	28	9.40	127	90	40	89	23.70			
41	346	331.81	315.69	26	117	50	28	80	12.80	28	9.90								
42	354	339.89	324.01	26	117	50	28	80	13.30	28	10.30	127	90	40	89	26.00			
43	362	347.97	331.86	26	117	50	28	80	13.80	28	10.80								
44	370	356.04	340.16	26	117	50	28	80	14.30	28	11.40								
45	378	364.12	348.02	26	117	50	28	80	14.90	28	11.90	127	90	40	89	28.40			
48	403	388.36	372.48	26	117	50	28	80	15.80	28	13.50	127	90	40	89	32.00			
49	411	396.44	380.56	26						28	14.08								
54	451	436.84	420.96	26	117	50	28	80	20.00	28	17.10	127	90	40	89	38.50			
60	500	485.33	469.45	26	117	50	28	80	23.10	28	21.10	127	90	40	89	46.20			
64	532	517.65	501.77	26						28	24.05								
65	540	525.73	509.70	26	127	63	28	89	24.80	28	24.80	127	90	40	89	52.00			
66	548	533.82	517.94	26						28	25.58								
70	581	566.15	550.27	26	127	63	28	89	32.10	28	28.80	127	90	40	89	65.00			
75	621	606.56	590.54	26	127	63	28	89	36.20	28	33.10								
80	662	646.97	631.09	26	137	71	28	95	42.90	28	37.60								
84	694	679.31	663.43	26						28	41.50								
90	743	727.80	711.92	26						28	47.60								

NOTES:  
 • Data in colored box imply teeth hardening.  
 • Shaft hole, key groove and tap hole can be machined upon request.  
 • Other sprockets than listed may be manufactured. For details, contact us.  
 • Sprocket marked with ★ has a groove at the external circumference of boss. See Groove Dimensions table above.  
 • Finished diameter of Drill hole of B-type (double-strand) sprocket is minimum shaft hole diameter minus 2 mm.

# ANSI 100 SPROCKETS

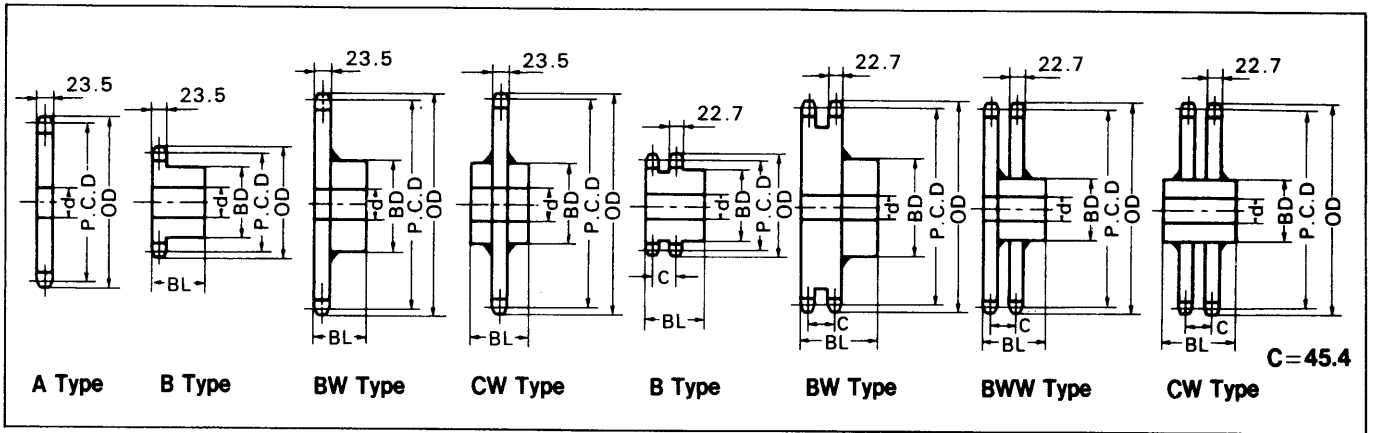


No. of Teeth	Outside Dia. OD	Pitch Dia. P.C.D	Bottom or Caliper Diam.	Stock Bore	Type "B" SINGLE STRAND				Wt. kg	Material	Type "A"		Type "B" DOUBLE STRAND				Wt. kg	Material
					HUB		BORE				Stock d	Wt. kg	HUB		BORE			
					Diam. BD	Length Thru Bore BL	Min.	Max.					Diam. BD	Length Thru Bore BL	Min.	Max.		
9	106	92.84	72.40	20	62	50	22	40	1.60									
10	117	102.74	83.69	20	65	50	22	45	1.90									
11	127	112.70	92.50	20	75	50	22	51	2.30									
12	138	122.67	103.62	20	86	50	22	57	2.90									
13	148	132.67	112.65	20	94	50	22	63	3.10									
14	158	142.68	123.63	20	98	50	22	66	3.60									
15	168	152.71	132.82	20	98	50	22	66	4.20									
16	179	162.74	143.69	20	98	50	22	66	4.60									
17	189	172.79	153.00	20	107	50	22	75	5.30									
18	199	182.84	163.79	20	107	50	22	75	5.70									
19	209	192.90	173.19	20	107	50	22	75	6.10									
20	220	202.96	183.91	20	107	50	22	75	6.50									
21	230	213.03	193.38	20	107	50	22	75	7.00									
22	240	223.10	204.05	20	117	56	22	80	7.90									
23	250	233.17	213.58	20	117	56	22	80	8.50									
24	260	243.25	224.20	20	117	56	22	80	8.80									
25	270	253.32	233.78	20	117	56	22	80	9.30									
26	281	263.40	244.35	20	117	56	22	80	9.80									
27	291	273.49	253.97	20	117	56	22	80	10.30									
28	301	283.57	264.52	20	117	56	22	80	10.90									
29	311	293.66	274.18	20	117	56	22	80	11.50									
30	321	303.75	284.70	26	117	56	28	80	12.10									
31	331	313.83	294.38	26														
32	341	323.92	304.87	26	117	56	28	80	13.40									
33	352	334.01	314.59	26	117	56	28	80	14.50									
34	362	344.11	325.06	26	117	56	28	80	16.10									
35	372	354.20	334.79	26	127	63	28	89	16.60									
36	382	364.29	345.24	26	127	63	28	89	17.50									
37	392	374.38	355.00	26	127	63	28	89	18.00									
38	402	384.48	365.43	26	127	63	28	89	18.90									
39	412	394.57	375.20	26														
40	422	404.67	385.62	26	127	63	28	89	20.40									
41	433	414.77	395.41	26	127	63	28	89	21.50									
42	443	424.86	405.81	26	127	63	28	89	22.60									
43	453	434.96	415.62	26														
44	463	445.06	426.01	26														
45	473	455.16	435.83	26	127	63	28	89	24.70									
46	483	465.25	446.20	26														
47	493	475.35	456.30	26	127	63	28	89	26.70									
48	503	485.45	466.40	26	127	63	28	89	27.50									
50	524	505.65	486.60	26	127	63	28	89	30.00									
52	544	525.85	506.80	26														
54	564	546.05	527.00	26	147	80	28	103	37.40									
55	574	556.15	537.10	26	147	80	28	103	41.60									
60	625	606.66	587.61	26	147	80	28	103	44.30									
65	675	657.17	637.93	26	147	80	28	103	44.50									
70	726	707.68	688.63	26	147	100	28	103	44.70									
75	777	758.20	738.98	26	147	100	28	103	47.00									
80	827	808.71	789.66	26														
90	928	909.75	890.70	26														

**NOTES:**

- Data in colored box imply teeth hardening.
- Shaft hole, key groove and tap hole can be machined upon request.
- Other sprockets than listed may be manufactured. For details, contact us.
- Sprocket marked with ● has a groove at the external circumference of boss. See Groove
- Dimensions table above
- Finished diameter of Drill hole of B-type (double-strand) sprocket is minimum shaft hole diameter minus 2 mm.

# ANSI 120 SPROCKETS

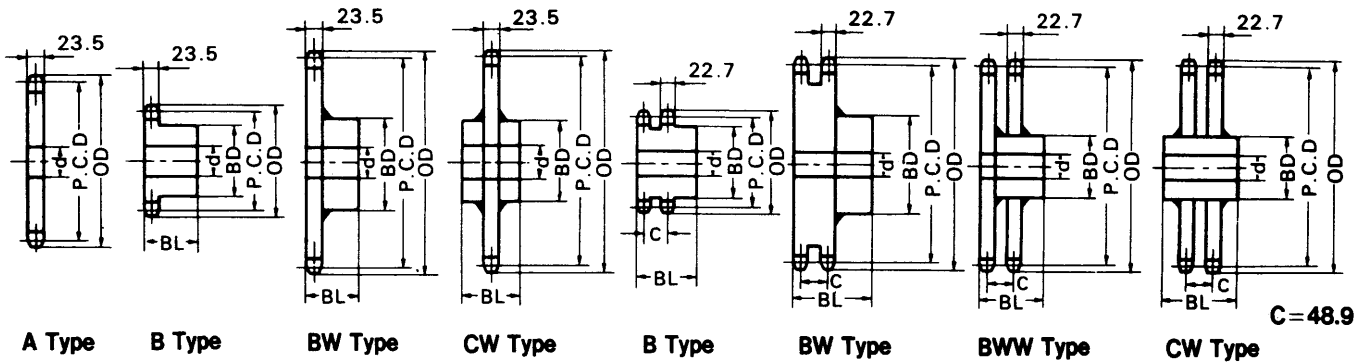


No. of Teeth	Outside Dia. OD	Pitch Dia. P.C.D.	Bottom or Caliper Diam.	Stock Bore	Type "B" SINGLE STRAND				Type "A"			Type "B" DOUBLE STRAND							
					HUB		BORE		Wt. kg	Material	Stock d	Wt. kg	Material	HUB		BORE		Wt. kg	Material
					Diam. BD	Length Thru Bore BL	Min.	Max.						Diam. BD	Length Thru Bore BL	Min.	Max.		
9	127	111.40	87.47	20	70	56	22	46	2.70										
10	140	123.29	101.06	20	78	56	22	51	3.20										
11	153	135.24	111.63	20	91	56	22	60	4.00										
12	165	147.21	124.98	20	98	56	22	66	4.80										
13	177	159.20	135.81	20	98	56	22	66	5.30										
14	190	171.22	148.99	20	107	56	22	75	6.30										
15	202	183.25	160.02	20	117	63	22	80	7.80										
16	214	195.29	173.06	20	117	63	22	80	8.40										
17	227	207.35	184.23	20	117	63	22	80	9.10										
18	239	219.41	197.18	20	117	63	22	80	9.90										
19	251	231.48	208.46	20	117	63	22	80	10.70										
20	263	243.55	221.32	20	127	63	22	89	12.10										
21	276	255.63	232.69	20	127	63	22	89	13.00										
22	288	267.72	245.49	26	127	63	28	89	13.40										
23	300	279.80	256.92	26	127	63	28	89	14.50										
24	312	291.90	269.67	26	127	63	28	89	15.20										
25	324	303.99	281.16	26	127	63	28	89	16.20										
26	337	316.09	293.86	26	127	63	28	89	17.20										
27	349	328.19	305.40	26															
28	361	340.29	318.06	26	137	71	28	95	20.90										
29	373	352.39	329.64	26															
30	385	364.50	342.27	26	137	71	28	95	23.20										
31	398	376.60	353.89	26															
32	410	388.71	366.48	26	137	71	28	95	25.70										
33	422	400.82	378.13	26	137	71	28	95	28.40										
34	434	412.93	390.70	26															
35	446	425.04	402.38	26	137	71	28	95	29.70										
36	458	437.15	414.92	26	137	71	28	95	32.00										
38	483	461.38	439.15	26	137	71	28	95	35.00										
40	507	485.60	463.37	26	147	80	28	103	38.20										
42	531	509.84	487.61	26	147	80	28	103	42.00										
44	556	534.07	511.84	26															
45	568	546.19	523.62	26	147	80	28	103	47.60										
46	580	558.30	536.07	26															
48	604	582.54	560.31	26	147	80	28	103	53.00										
50	628	606.78	584.55	26	147	80	28	103	58.00										
54	677	655.26	633.03	26	● 147	100	28	103	65.20										
60	750	727.99	705.76	26	● 167	100	28	103	78.00										
63	786	764.35	742.12	26															
70	871	849.22	826.99	26															
75	932	909.84	887.41	26															
80	993	970.46	948.23	26															

- NOTES:
- Data in colored box imply teeth hardening.
  - Shaft hole, key groove and tap hole can be machined upon request.
  - Other sprockets than listed may be manufactured. For details, contact us.
  - Sprocket marked with ● has a groove at the external circumference of boss. See Groove Dimensions table above.
  - Finished diameter of Drill hole of B-type (double-strand) sprocket is minimum shaft hole diameter minus 2 mm.



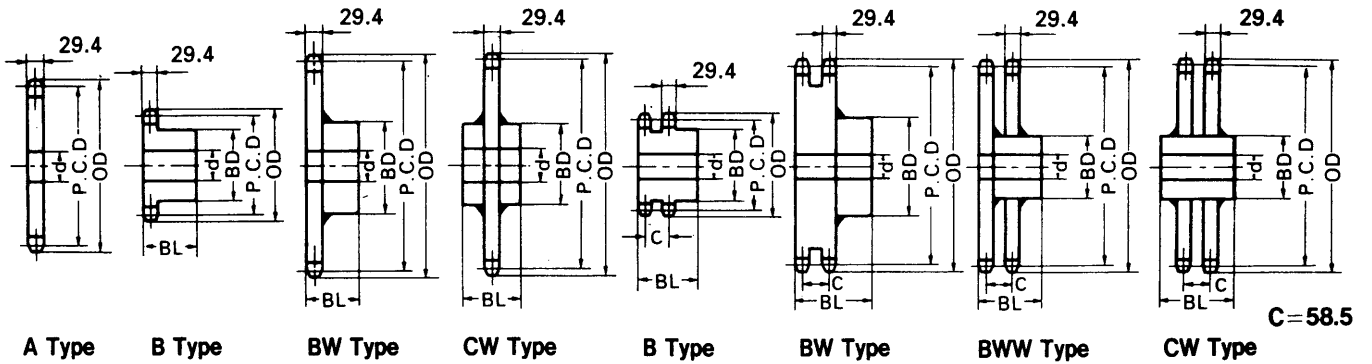
# ANSI 140 SPROCKETS



No. of Teeth	Outside Diam. OD	Pitch Diam. P.C.D	Bottom or Caliper Diam.	Stock Bore	Type "B" SINGLE STRAND				Wt. kg	Material	Type "A"				
					HUB		BORE				Stock d	Wt. kg	Material		
					Diam. BD	Length Thru Bore BL	Min.	Max.							
10	163	143.84	118.44	26	98	56	28	66	4.90	S45C	28	2.90			
11	178	157.78	130.77	26	106	56	28	70	5.50		28	3.60			
12	193	171.74	146.34	26	117	56	28	80	6.60		28	4.20			
13	207	185.74	158.98	26	117	63	28	80	7.90		28	4.90			
14	221	199.76	174.36	26	127	63	28	89	9.30		28	5.70			
15	236	213.79	187.22	26	127	63	28	89	10.10		28	6.60			
16	250	227.84	202.44	26	127	63	28	89	11.00		28	7.50			
17	264	241.91	215.47	26	127	63	28	89	12.00		28	8.40			
18	279	255.98	230.58	26	127	63	28	89	13.00		28	9.40			
19	293	270.06	243.74	26	137	71	28	95	15.60		28	10.50			
20	307	284.15	258.75	26	137	71	28	95	16.70		28	11.60			
21	322	298.24	272.00	26	137	71	28	95	17.90		28	12.80			
22	336	312.34	286.94	26	137	71	28	95	18.40		28	14.10			
23	350	326.44	300.28	26	137	71	28	95	20.10		28	15.30			
24	364	340.54	315.14	26	137	71	28	95	20.90		28	16.70			
25	379	354.65	328.56	26	147	80	28	103	24.10		28	18.10			
26	393	368.77	343.37	26	147	80	28	103	25.50		28	19.60	S45C		
27	407	382.88	356.83	26	147	80	28	103	28.20		SS41 BW type (welding way)				
28	421	397.00	371.60	26	147	80	28	103	30.10						
30	450	425.24	399.84	26	147	80	28	103	31.50			28	26.00		
32	478	453.49	428.09	26	147	80	28	103	36.00			28	29.70		
35	521	495.88	369.98	26	157	90	28	110	42.90	28		35.60			
36	535	510.01	484.61	26	157	90	28	110	47.40	28		37.60			
38	563	538.27	512.87	26	157	90	28	110	51.00	28		41.90			
40	591	566.54	541.14	26	157	90	28	110	53.10	28		46.40			
42	620	594.81	569.41	26	157	90	28	110	60.00	28		51.10			
45	662	637.22	611.43	26	● 167	100	28	118	68.00	28		58.80			
48	705	679.63	654.23	26	● 167	100	28	118	75.00	28	66.90				
50	733	707.91	682.51	26	● 167	100	28	118	85.30	28	72.50				
54	790	764.47	739.07	26	● 167	100	28	118	97.40	28	84.60				
60	875	849.32	823.92	26	● 167	112	28	118	119.30	28	104.00				

- NOTES:
- Data in colored box imply S45C machined without teeth hardening.
  - Sprocket marked with ● is C-type (welded).
  - Material of B-type with number of teeth of 14 to 21 is S45C, and that of boss is SS41 without teeth hardening.
  - For sprockets with 14 to 21 teeth, its material may be changed to forged steel (S45C) without notice according to material or manufacturing situations.
  - Shaft hole, key groove and tap hole may be machined upon request.
  - Other sprockets than listed may be manufactured. For details, contact us.

# ANSI 160 SPROCKETS



No. of Teeth	Outside Diam. OD	Pitch Diam. P.C.D	Bottom or Caliper Diam.	Stock Bore	Type "B" SINGLE STRAND				Wt. kg	Material	Type "A"				
					HUB		BORE				Stock d	Wt. kg	Material		
					Diam. BD	Length Thru Bore BL	Min.	Max.							
10	186	164.39	135.81	26	105	63	28	70	6.80	S45C	28	4.85	S45C		
11	204	180.31	149.90	26	117	63	28	80	8.30		28	5.85			
12	220	196.28	167.70	26	127	63	28	89	9.90		28	6.90			
13	237	212.27	182.14	26	137	71	28	95	12.50		28	8.10			
14	253	228.30	199.72	26	137	71	28	95	13.80		28	9.40			
15	269	244.33	214.42	26	137	71	28	95	15.20		28	10.80			
16	286	260.39	231.81	26	147	71	28	103	17.40		28	12.25			
17	302	276.46	246.71	26	147	71	28	103	18.90		28	13.80			
18	319	292.55	263.97	26	147	71	28	103	20.60		28	15.50			
19	335	308.64	279.00	26	147	71	28	103	22.30		28	17.20			
20	351	324.74	296.16	26	147	71	28	103	24.20		28	19.00			
21	368	340.84	311.31	26	147	71	28	103	26.10		28	21.00			
22	384	356.96	328.38	26	167	80	28	118	30.20		28	23.00			
23	400	373.07	343.62	26							28	25.10			
24	416	389.19	360.61	26	167	80	28	118	34.40		28	27.40			
25	433	405.32	375.94	26	167	80	28	118	36.60		28	29.70			
26	449	421.45	392.87	26	167	80	28	118	38.90		28	32.10			
28	481	453.72	425.14	26											
30	514	485.99	457.41	26	167	100	28	118	52.30		SS41 BW type (welding way)	28		42.70	S45C
32	546	518.28	489.70	26	167	100	28	118	59.00			28		48.70	
35	595	566.71	537.57	26	167	100	28	118	66.90			28		58.10	
38	644	615.17	586.59	26						28		68.50			
40	676	647.47	618.89	26	167	112	●28	118	88.00	28		75.10			
42	708	679.78	651.20	26						28		83.60			
45	757	728.25	699.23	26	187	125	●28	132	93.00	28		96.00			
48	806	776.72	748.14	26	187	125	●28	132	101.00	28		109.00			
50	838	809.04	780.46	26	187	125	●28	132	138.70	28		118.50			
54	903	873.68	845.10	26	187	125	●28	132	158.40	28		138.20			
60	1000	970.65	942.07	26	187	125	●28	132	190.80	28	170.00				

**NOTES:**

- Data in colored box imply S45C machined without teeth hardening.
- Sprocket marked with ● is C-type (welded).
- Material of B-type with number of teeth of 14 to 21 is S45C and that of boss is SS41 without teeth hardening.
- For sprockets with 14 to 21 teeth, its material may be changed to forged steel (S45C) without notice according to material or manufacturing situations.
- Shaft hole, key groove and tap hole may be machined upon request.
- Other sprockets than listed may be manufactured. For details, contact us.