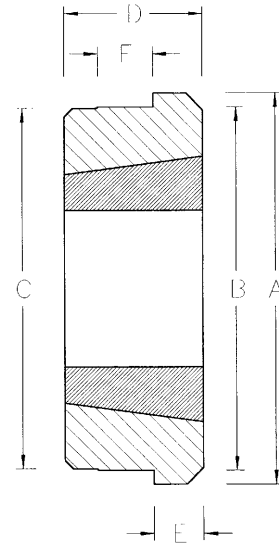


# WELD-ON-HUB / BOLT-ON-HUB / ADAPTOR

**WELD-ON-HUB** The flanges provide convenient means of welding hubs into Plate Sprockets, Conveyor Pulleys and many others devices which must be firmly fastened to shafts.

Weld-On Hubs are easy to install and entirely suitable for severe operating conditions

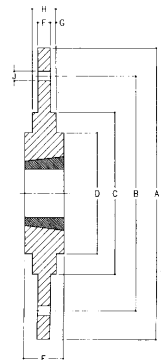
Model Number	Bush Size	A	B	C	D	E	F
WM 12	1210	70	60	58.0	25	9	10
WM 16-1	1610	83	70	68.0	25	9	10
WM 16-2	1615	83	70	68.0	38	16	10
WM 20	2012	95	90	88.0	32	12	12
WM 25	2517	127	110	108.0	44	19	13
WM 30-2	3020	152	130	125.0	50	25	15
WM 30	3030	152	130	125.0	76	25	19
WM 35	3535	184	155	151.0	89	32	25
WH 12	1210	70	65	64.5	25	9	10
WH 16	1610	80	75	74.5	25	9	10
WH 20	2012	95	90	89.5	32	12	12
WH 25	2517	115	110	109.5	44	19	15
WH 30	3020	145	140	139.5	50	19	15
WH 35-2	3525	190	180	179.5	65	25	25
WH 35	3535	190	180	179.5	89	32	25



**BOLT-ON-HUB** are designed for use with Taper Bushes. The design allows the same hub to be used from both sides thus reducing the cost. It provides convenient means of securing Impellers, Fan Rotors and other components which must be firmly fastened to shaft.

Model Number	Bush Size	A	B	C	D	E	F	G	H	J
Sm 12	1210	180	135	90	75	25	6.5	2.50	11.50	6 x dia.7.5 holes
Sm 16	1615	200	150	110	85	38	7.5	2.50	12.50	6 x dia.7.5 holes
SM 20	2012	270	190	140	110	32	8.5	2.50	13.50	6 x dia.9.5 holes
SM 25	2517	340	240	170	125	45	9.5	2.50	14.50	8 x dia.11.5 holes
SM 30-1	3020	430	300	220	160	51	13.5	2.50	18.50	8 x dia.13.5 holes
SM 30-2	3020	485	340	250	160	51	13.5	2.50	18.50	8 x dia.13.5 holes

All dimension in mm unless specified.



**ADAPTOR** The design allow any hub and shaft to be locked by taper bush without welding or bolting only bore the hub to the outside diameter of adaptor, easy means to utilize the Taper Bush Benefit

Model Number	Type	Bush No.	Outside dia C $+0.025$ $-0.075$	Width "B"	Wedge Width	Wedge Depth
1008 BM	m/not	1008	45	22	5,0	2,5
1210 BM	m/not	1210	60	25	6,0	3,0
1215 BM	m/not	1215	60	38	6,0	3,0
1610 BM	m/not	1610	70	25	10,0	4,0
1615 BM	m/not	1615	70	38	10,0	4,0
2017 BM	m/not	2017	90	45	12,0	4,0
2517 BM	m/not	2517	105	45	16,0	4,0
2525 BM	m/not	2525	105	64	16,0	4,0
3020 BM	m/not	3020	130	76	20,0	5,0
3030 BM	m/not	3030	130	76	20,0	5,0
3535 BM	m/not	3535	160	89	22,0	5,0
4040BM	m/not	4040	185	102	24,0	5,0

