

MSB SERIES ALUMINIUM HOUSING BRAKE-MOTORS THREE PHASE INDUCTION MOTORS

MOTOR FEATURES

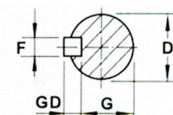
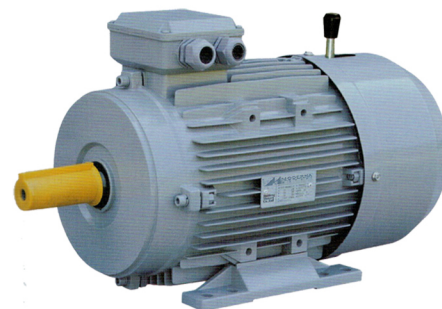
- Rated outputs and frame sizes in accordance with IEC60034 standards
- Duty type S1(continuous duty) with sufficient thermal margin to withstand short overload
- Enclosure protection IP55. -Insulation class F. -Maximum ambient 40°C
- Altitude ≤ 1000m a.s.l. -Type of brake : D.C. brake

CUSTOMER BENEFITS

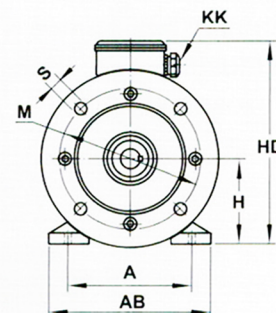
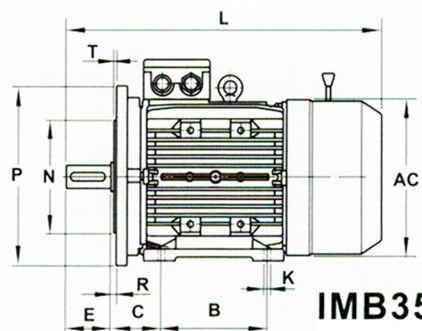
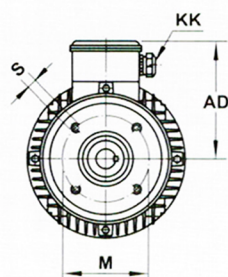
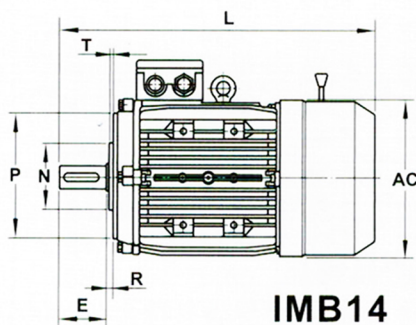
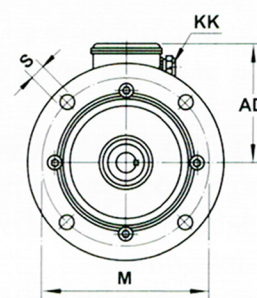
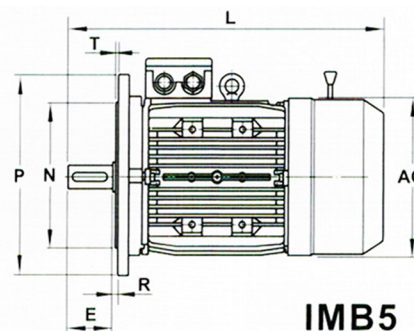
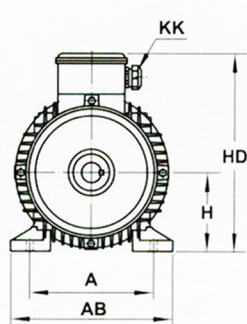
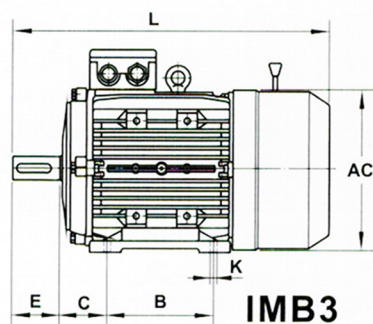
- High braking force moment, suitable for any frequently started machines
- Suitable for any kind of machine which is required stop quickly, located accurately, reliable, safe.
- Low vibration and low noise. -Easy to maintain, the brake can be uncharged by hand lever.

GENERAL SPECIFICATIONS

- Terminal box rotates 4 * 90° -Enclosed shaft key.
- Removable feet, multi mount -Terminal box left or right hand side.



Frame 63-90 motor without eyebolts.



IEC Frame No.	Mounting Dimensions (mm)																			Overall Dimensions (mm)					Cable Glands			
	IMB3 Foot Mounting									IMB5 Flange					IMB14 Face					AB	AC	AD	HD	L		KK		
	A	B	C	D	E	F	GD	G	H	K	M	N	P	R	S	T	M	N	P	R	S	T	AB	AC	AD	HD	L	KK
63	100	80	40	11	23	4	-	8.5	63	7	115	95	140	0	10	3.0	75	60	90	0	M5	2.5	120	119	119	182	255	M20×1.5
71	112	90	45	14	30	5	-	11	71	7	130	110	160	0	10	3.5	85	70	105	0	M6	2.5	132	137	126	197	305	M20×1.5
80	125	100	50	19	40	6	6	15.5	80	10	165	130	200	0	12	3.5	100	80	120	0	M6	3.0	160	155	149	229	340	M20×1.5
90S	140	100	56	24	50	8	7	20	90	10	165	130	200	0	12	3.5	115	95	140	0	M8	3.0	175	172	153	243	362	M20×1.5
90L	140	125	56	24	50	8	7	20	90	10	165	130	200	0	12	3.5	115	95	140	0	M8	3.0	175	172	153	243	388	M20×1.5
100L	160	140	63	28	60	8	7	24	100	12	215	180	250	0	14.5	4.0	130	110	160	0	M8	3.5	198	194	165	265	450	M20×1.5
112M	190	140	70	28	60	8	7	24	112	12	215	180	250	0	14.5	4.0	130	110	160	0	M8	3.5	220	217	174	286	465	M25×1.5
132S	216	140	89	38	80	10	8	33	132	12	265	230	300	0	14.5	4.0	165	130	200	0	M10	3.5	252	252	192	324	520	M25×1.5
132M	216	178	89	38	80	10	8	33	132	12	265	230	300	0	14.5	4.0	165	130	200	0	M10	3.5	252	252	192	324	558	M25×1.5
160M	254	210	108	42	110	12	8	37	160	14.5	300	250	350	0	18.5	5.0	215	180	250	0	M12	4.0	290	307	230	390	715	M32×1.5
160L	254	254	108	42	110	12	8	37	160	14.5	300	250	350	0	18.5	5.0	215	180	250	0	M12	4.0	290	307	230	390	715	M32×1.5

- NOTE: 1.IMB35 refer to the dimensions of IMB3 and IMB5.
 2.Mounting dimensions comply with IEC60072-1, EN50347.
 3.Tolerance of Shaft End Diameter D: $\phi 28$ and below: j6; $\phi 38$ and $\phi 42$: k6.
 4.Tolerance of Shaft Centre Height H: +0, -0.5.
 5.Tolerance of N: j6.

Brake Farne	06	08	10	12	14	16	18	20	25
Motor Farne	56.63.71	80	90	100	112	132	160	180	200
Rated Braking Torque Nm (@100/min)	4	8	16	32	60	80	150	260	400