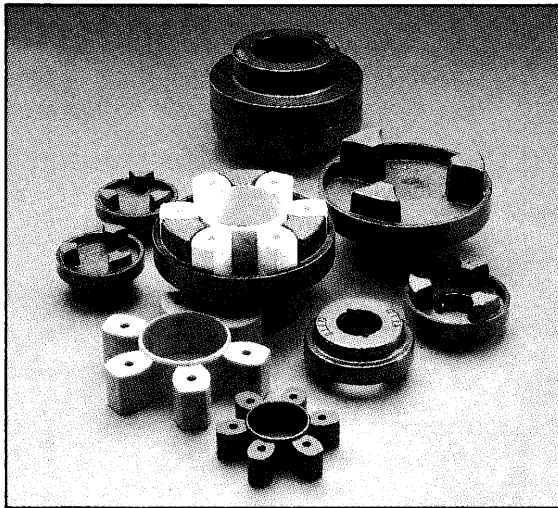


# FLEXIBLE SHAFT COUPLING



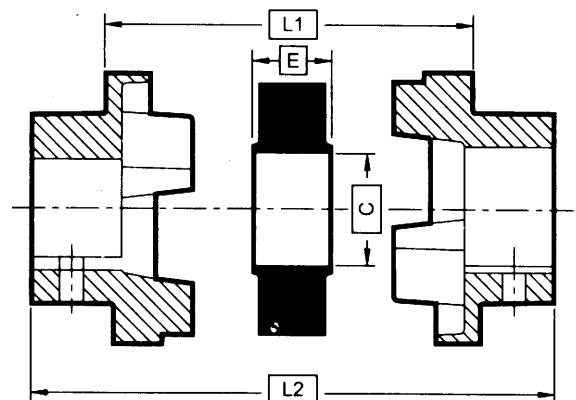
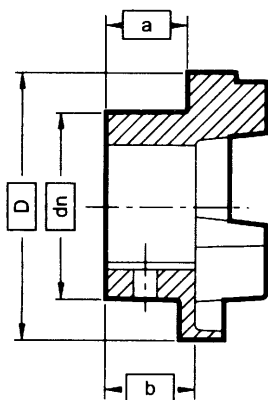
## STANDARD TYPE : KS

- APPLICABLE TO MOST OF MACHINERY AND HYDRAULICS
- FINE GRAIN CAST IRON
- POLYETHER BLOCK AMIDES "PEBAX<sup>®</sup>" FLEXIBLE ELEMENT, OIL RESISTANCE PARTIALLY CHEMICAL RESISTANCE TEMP. -40°C UP TO + 85°C
- COMPACT AND LIGHT WEIGHT

KS : STANDARD TYPE (mm) : DIMENSION AND TECHNICAL DATA

SIZE	MAX. BORE	TORQUE (NM)		MAX. SPEED (R.P.M.)	MOMENT OF INERTIA (KgM <sup>2</sup> )	WEIGHT (KG)	D	dn	a	b	c	E	L <sub>1</sub>	L <sub>2</sub>
		NOM.	MAX											
7	32	33	73	7700	0.00078	1.1	69	60	20	23.5	31	18.0	25	65
9	42	84	185	6300	0.00108	1.17	85	70	26	30	32	22.5	30.5	82.5
11	55	168	370	5000	0.00344	5.0	112	100	37	45	45	29.0	45	119
13	60	331	728	4100	0.00850	5.46	139	105	47	55.5	50	36.0	53	147
15	70	630	1490	3600	0.02112	7.11	150	115	50	60	62	40.0	60	160
18	80	998	2300	3000	0.04820	16.6	180	125	58	70	77	49.0	73	189
23	100	2100	4800	2600	0.14052	26	225	155	77	90	99	59.5	85.5	239.5
28	130	3308	7000	2200	0.54790	50	275	206	90	105.5	119	74.5	105.5	285.5

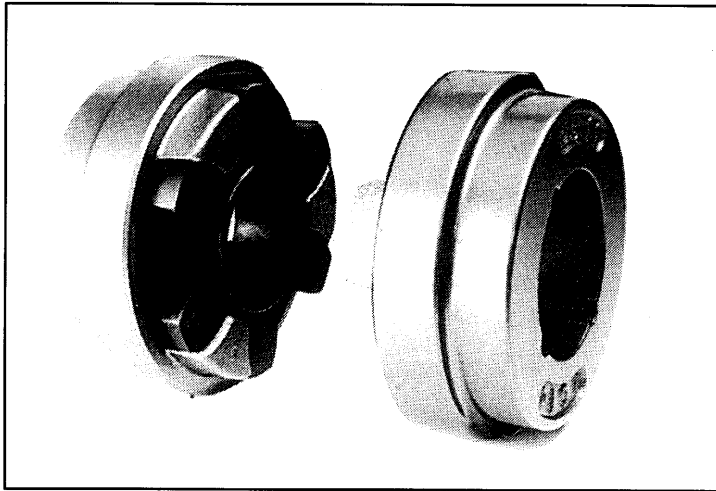
## TYPE : KS



Permissible misalignment tolerances in mm

Size of coupling	7	9	11	13	15	18	23	28
End float	+0,2	+0,5	+0,6	+0,8	+0,9	+1,1	+1,3	+1,7
Axial (Radial)	0,3	0,3	0,3	0,4	0,4	0,4	0,5	0,5
Angular misalignment °	0,50°	0,5°	1,0°	1,0°	1,5°	1,5°	2,0°	2,5°

# FLEXIBLE SHAFT COUPLING



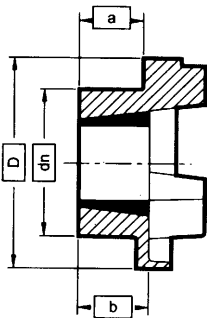
## BUSH TYPE : KI, KU

- TAPER BUSH TYPE, EASY TO INSTALL AND REMOVE
- REMOVE OF THE COUPLING WITHOUT REMOVE THE DRIVER OR DRIVEN
- FINE GRAIN CAST IRON
- POLYETHER BLOCK AMIDES "PEBAX<sup>®</sup>" FLEXIBLE ELEMENT, OIL RESISTANCE PARTIALLY CHEMICAL RESISTANCE TEMP. -40°C UP TO + 85°C
- COMPACT AND LIGHT WEIGHT

KI, KU BUSH TYPE (mm) : DIMENSION AND TECHNICAL DATA

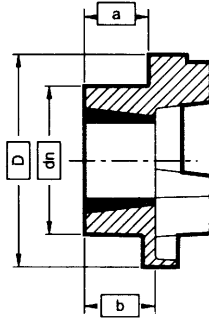
SIZE	BUSH No.	BORE		TORQUE (N.m.)		MAX. SPEED (R.P.M.)	MOMENT OF INERTIA (KGM <sup>2</sup> )	WEIGHT (KG)	D	dn	a	b	c	L <sub>1</sub>	L <sub>2</sub>
		MIN.	MAX.	NOM.	MAX.										
7	1008	9	25	33	73	7700	0.00085	1.0	69	60	20.6	23.5	31	25	65
9	1108	9	28	84	185	6300	0.00115	1.17	85	70	19.5	23.5	32	30.5	69.5
11	1610	12	42	168	370	5000	0.00400	5	112	100	18.5	26.5	45	45	82
13	1610	12	42	331	728	4100	0.00780	5.46	139	105	18	26.5	50	53	89
15	2012	14	50	630	1490	3600	0.01810	7.11	150	115	23.5	33.5	62	60	107
18	2517	16	65	998	2300	3000	0.04340	16.6	180	125	34.5	46.5	77	73	142
23	3020	25	75	2100	4800	2600	0.12068	26.0	225	155	39.5	52.5	99	85.5	164.5
28	3525	28	90	3308	7000	2200	0.44653	50.0	275	206	51	66.5	119	105.5	207.5

TYPE : KI

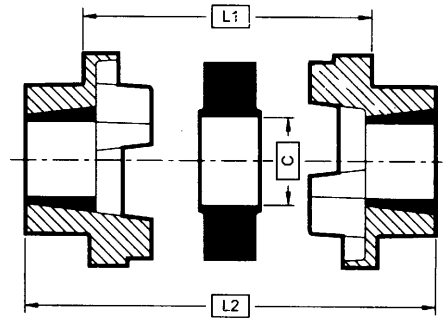


Flange for internal mounting of bush

TYPE : KU



Flange for external mounting of bush



Total length

Permissible misalignment tolerances in mm

Size of coupling	7	9	11	13	15	18	23	28
End float	+0,2	+0,5	+0,6	+0,8	+0,9	+1,1	+1,3	+1,7
Axial (Radial)	0,3	0,3	0,3	0,4	0,4	0,4	0,5	0,5
Angular misalignment°	0,5°	0,5°	1,0°	1,0°	1,5°	1,5°	2,0°	2,5°